



451 N 2nd Street

451 N 2nd St

Columbia, Pennsylvania 17512

Property Overview

For lease, lease rate is negotiable. Seeking tenants for a 3-5 year deal.

Offering Summary

Lease Rate:	Negotiable
Building Size:	40,000 SF
Available SF:	40,000 SF
Lot Size:	156,816 SF

Demographics 1 Mile 5 Miles 10 Miles

	1 Mile	5 Miles	10 Miles
Total Households	3,791	20,664	92,468
Total Population	8,427	49,259	226,360

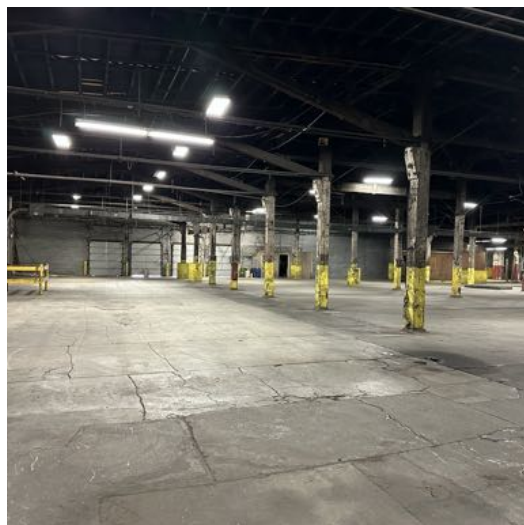
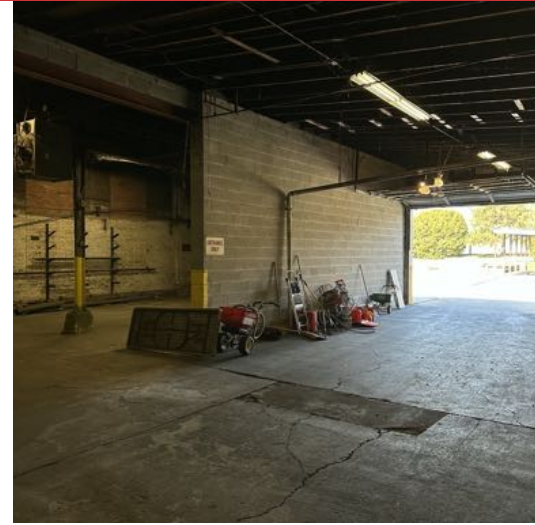
For More Information

Kevin Wolfe

O: 610 370 8523
kwolfe@naikeystone.com

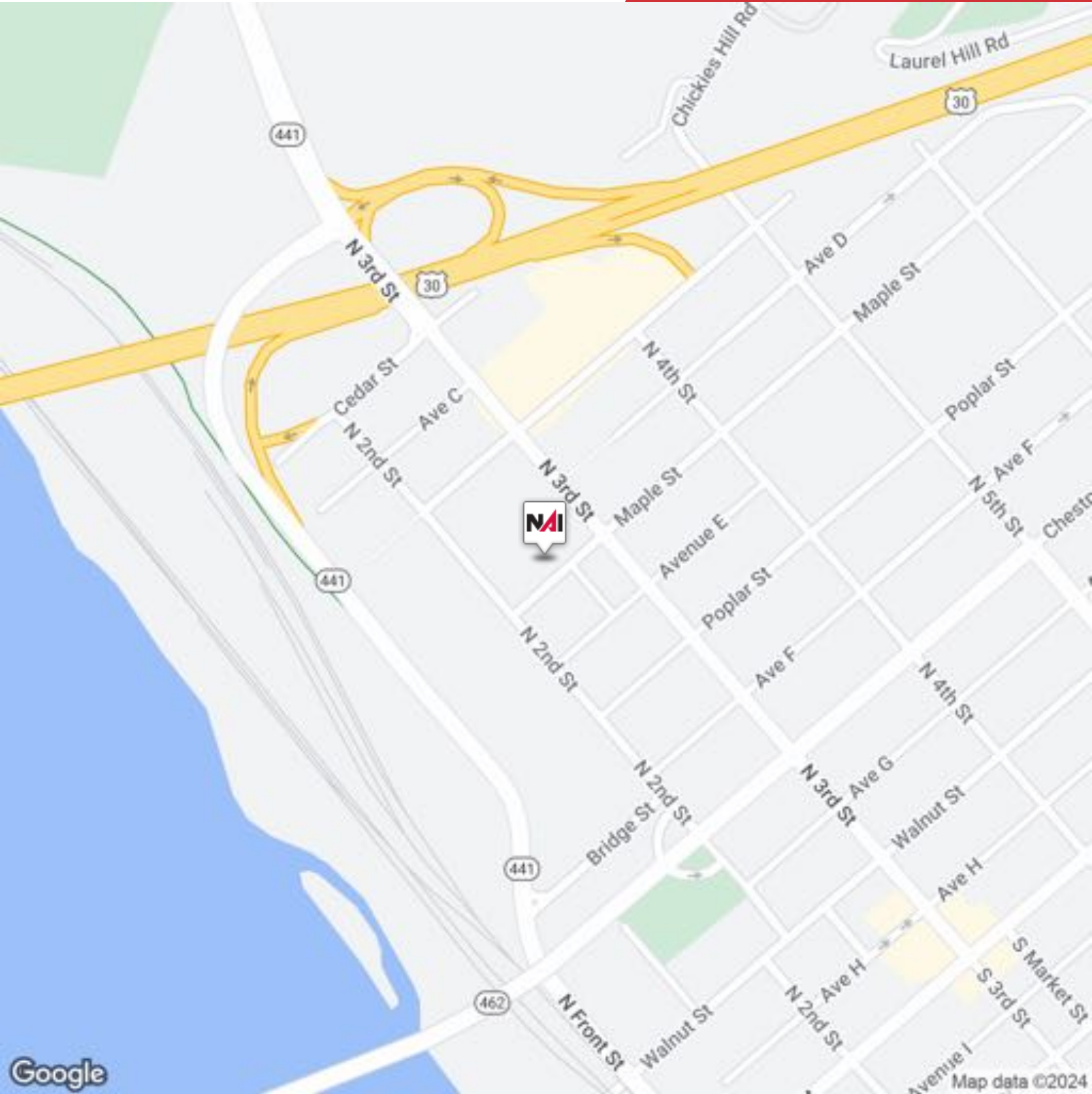
Patrick Zerbe

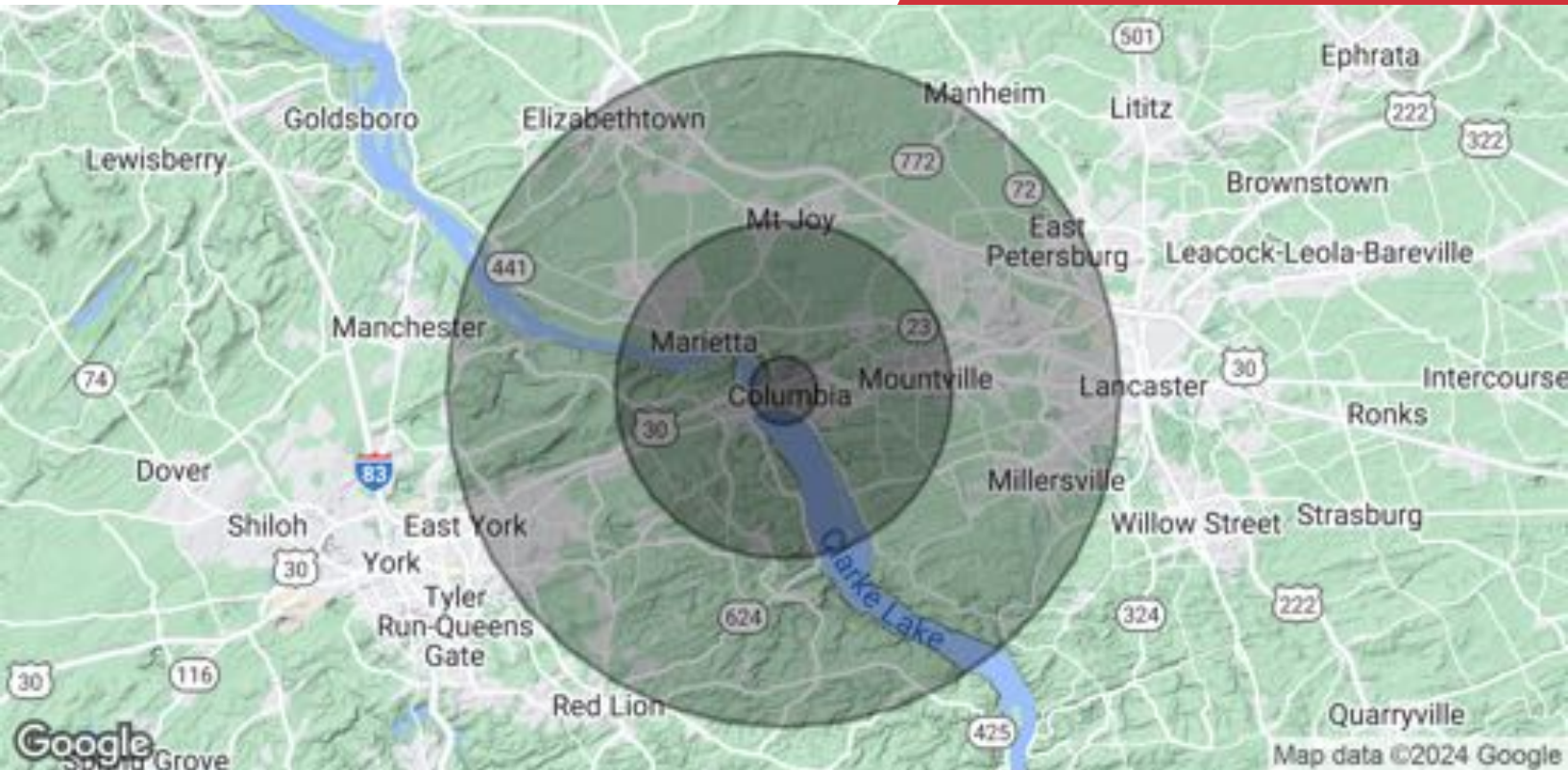
O: 610 370 8507
pzerbe@naikeystone.com | PA #RS356626



We obtained the information above from sources we believe to be reliable. However, we have not verified its accuracy and make no guarantee, warranty or representation about it. It is submitted subject to the possibility of errors, omissions, change of price, rental or other conditions, prior sale, lease or financing, or withdrawal without notice. We include projections, opinions, assumptions or estimates for example only, and they may not represent current or future performance of the property. You and your tax and legal advisors should conduct your own investigation of the property and transaction.

875 Berkshire Boulevard Suite 102
Wyomissing, PA 19610
610 779 1400 tel
naikeystone.com





Population	1 Mile	5 Miles	10 Miles
Total Population	8,427	49,259	226,360
Average Age	39.1	41.4	41.7
Average Age (Male)	37.9	40.9	40.7
Average Age (Female)	39.8	41.2	42.7
Households & Income	1 Mile	5 Miles	10 Miles
Total Households	3,791	20,664	92,468
# of Persons per HH	2.2	2.4	2.4
Average HH Income	\$54,202	\$76,796	\$83,228
Average House Value	\$127,180	\$206,526	\$210,700

* Demographic data derived from 2020 ACS - US Census